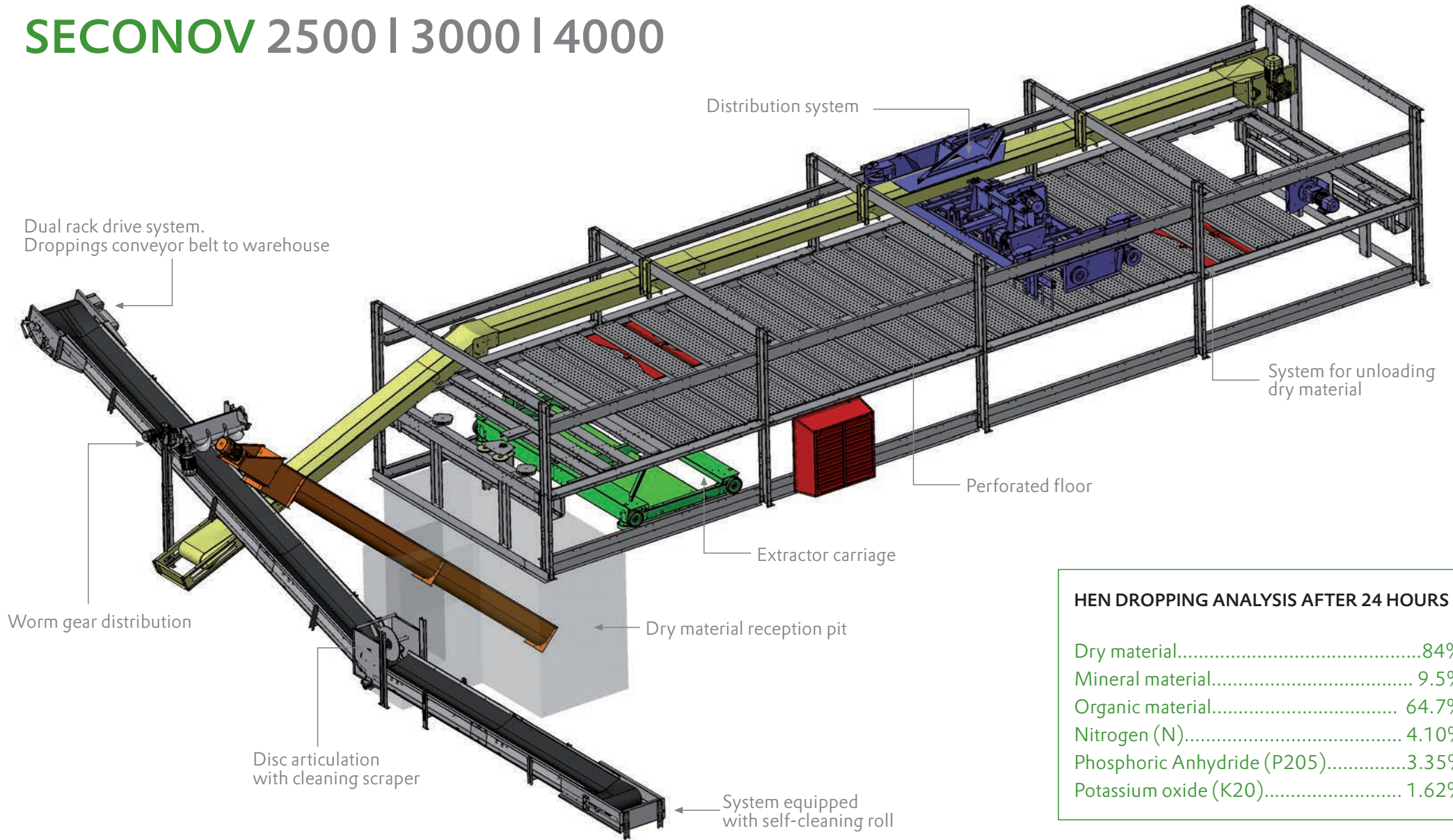


SECONOV 2500 | 3000 | 4000



HEN DROPPING ANALYSIS AFTER 24 HOURS

Dry material.....	84%
Mineral material.....	9.5%
Organic material.....	64.7%
Nitrogen (N).....	4.10%
Phosphoric Anhydride (P2O5).....	3.35%
Potassium oxide (K2O).....	1.62%



zucami[®]
POULTRY EQUIPMENT

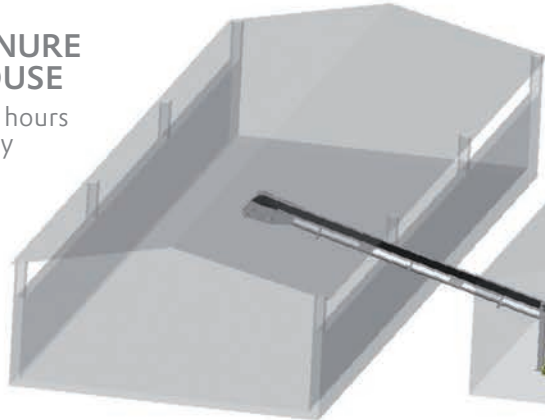
Polígono Morea Norte, calle C - Nº2 | 31191 Beriain, Navarra, SPAIN
 T +34 948 368 301 | F +34 948 368 363
 www.zucami.com

The green ones

CAPACITY 200.000 BIRDS

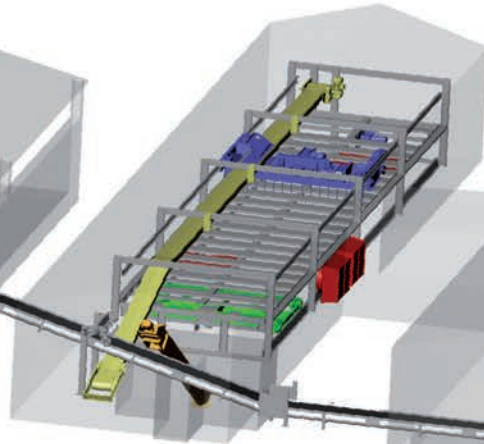
BIRD MANURE WAREHOUSE

Drying in 24 hours
80 / 85% dry material



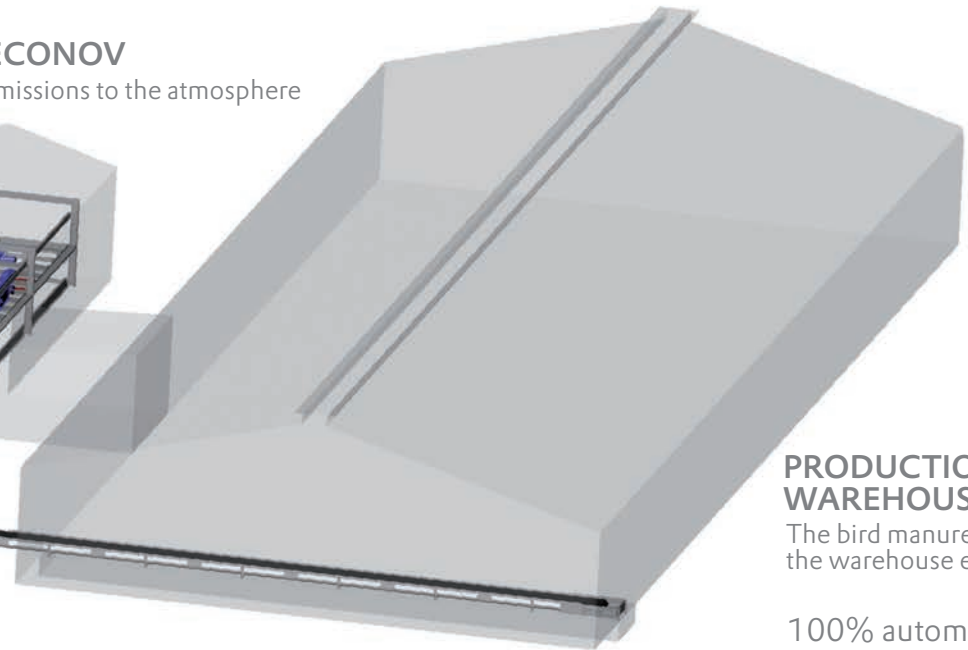
SECONOV

Free of ammonia emissions to the atmosphere



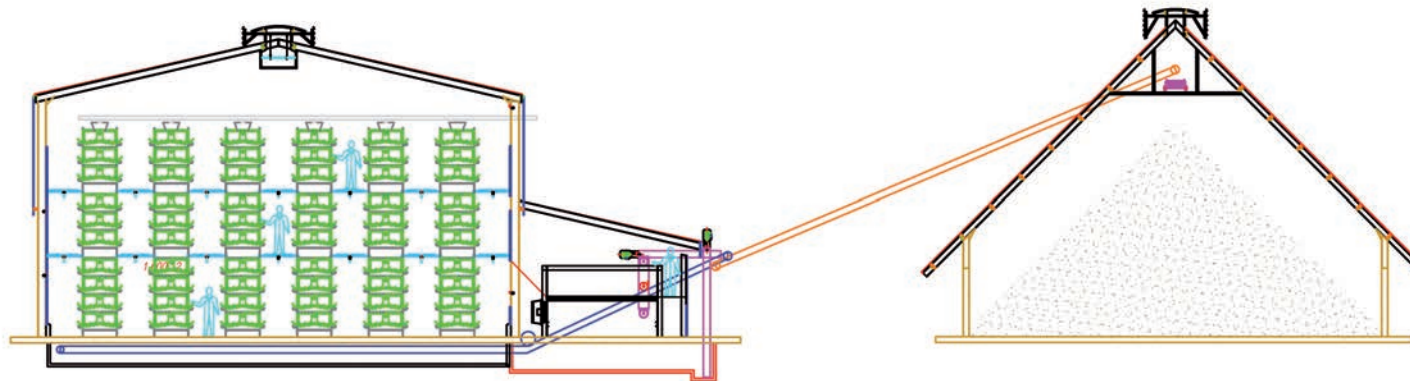
PRODUCTION WAREHOUSE

The bird manure is removed from the warehouse every day



100% automatic process

Presentation of bird manure drying facility **SECONOV 4000**



zucami[®]
POULTRY EQUIPMENT

Polígono Morea Norte, calle C - Nº2 | 31191 Beriain, Navarra, SPAIN
T +34 948 368 301 | F +34 948 368 363
www.zucami.com

The green ones

